

RoHS



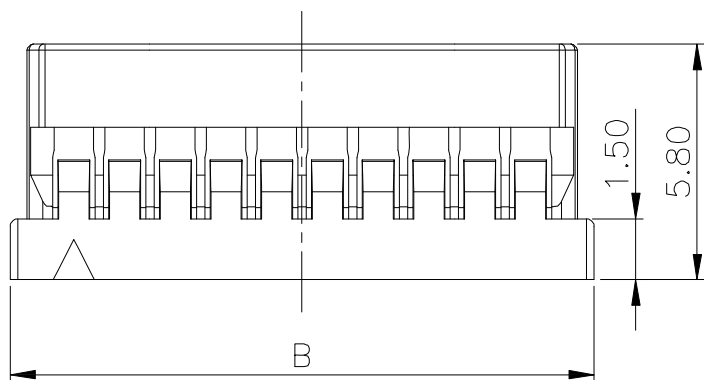
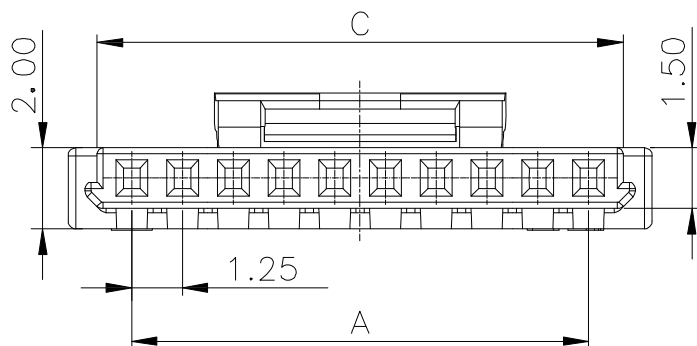
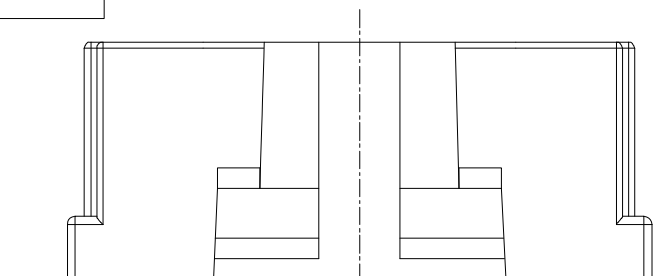
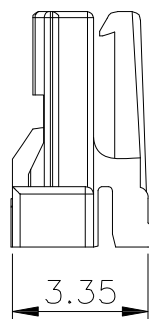
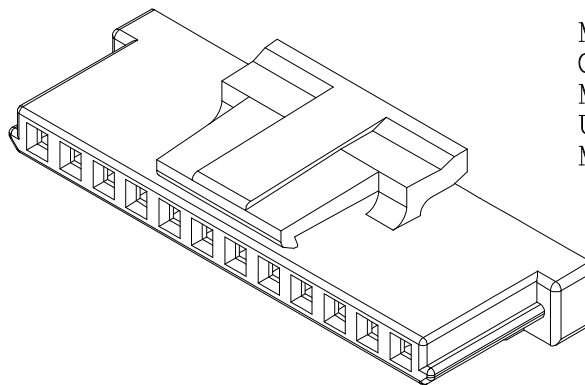
Specifications:

Electrical
 Rated Voltage: 150V AC,DC
 Rated Current: 1A
 Withstand Voltage: 500V AC/minute
 Contact Resistance: 30mΩ (MAX.)
 Insulation Resistance: 500MΩ (MIN.)
 Temperature Range: -35°C~+85°C

Material and Finish:
 Circuits: 2~10,15,20,25,30
 Material: NYLON UL 94V-0
 Use With: A1251T
 Mates With: A1251W

Dimensional Information:

Part No.	Dimensions		
	A	B	C
2P	1.25	4.40	2.75
3P	2.50	5.65	4.00
4P	3.75	6.90	5.25
5P	5.00	8.15	6.50
6P	6.25	9.40	7.75
7P	7.50	10.65	9.00
8P	8.75	11.90	10.25
9P	10.00	13.15	11.50
10P	11.25	14.40	12.75
11P	12.50	15.65	14.00
12P	13.75	16.90	15.25
15P	17.50	20.65	19.00
20P	23.75	26.90	25.25
25P	30.00	33.15	31.50
30P	36.25	39.40	37.75



					GENERAL TOLERANCE .X ±0.35 .XX ±0.25 .XXX ±0.15 X.° ±2°		GYA 东莞市国亚电子有限公司 Connectors Dong Guan Guo Ya Connectors co., Ltd.		PART NO. A1251H-XXX					
					PROJECT		APPROVAL	CHECK	DRAWN	DATE	TITLE 1.25 mm Crimp Style Connectors			
DATE	REV	ECN NO.	DESCRIPTION	MODIFY	APPROVAL	Yangzhengguo	Yangzhengyi	Lvtiansheng	2016/08/26	UNIT	SCALE	SHEET	REV	NUMBER
1										mm	1:1	1/1	A0	A-025

RoHS

Specifications:

Electrical

Rated Voltage: 150V AC,DC

Rated Current: 1A

Withstand Voltage: 500V AC/minute

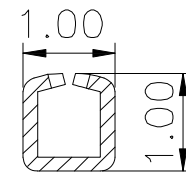
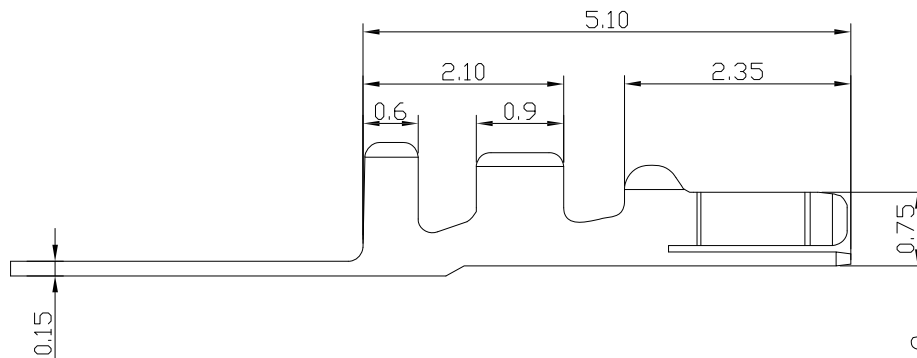
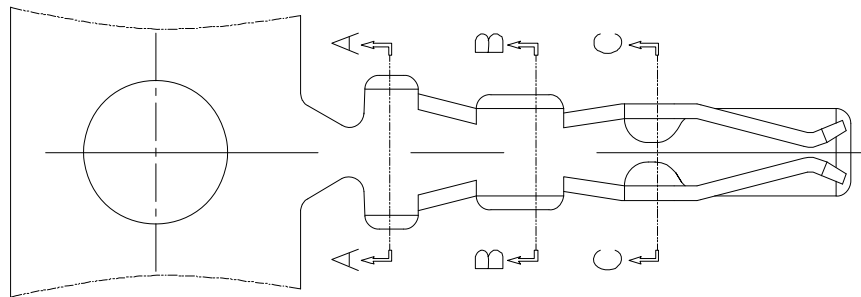
Contact Resistance: 30mΩ (MAX.)

Insulation Resistance: 500MΩ (MIN.)

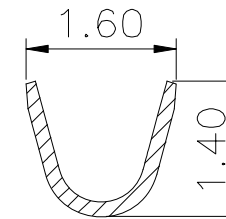
Temperature Range: -35°C~+85°C

Material and Finish:

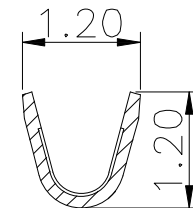
Use With:A1251H



SECTION C-C



SECTION A-A



SECTION B-B

Wire Range	Insulation O. D.	Material	Finish	Qty/reel
AWG#28-#32	0.90mm(max)	Phosphor Bronze	Tin-plated	15000Pcs
AWG#28-#32	0.90mm(max)	Phosphor Bronze	Gold-plated	15000Pcs

GENERAL TOLERANCE	
.X	±0.35
.XX	±0.25
.XXX	±0.15
X.°	±2°



东莞市国亚电子有限公司
Dong Guan Guo Ya Connectors co., Ltd.

PART NO.
A1251T-XXX

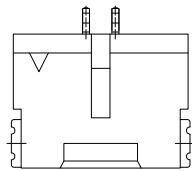
TITLE 1.25 mm Crimp Style Connectors

APPROVAL	CHECK	DRAWN	DATE
Yangzhengguo	Yangzhengyi	Lvtiansheng	2016/08/26

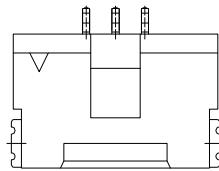
UNIT	SCALE	SHEET	REV	NUMBER
mm	1:1	1/1	A0	A-025

DATE	REV	ECN NO.	DESCRIPTION	MODIFY	APPROVAL
1					

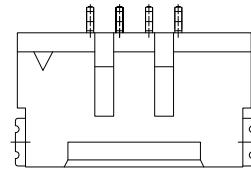
RoHS



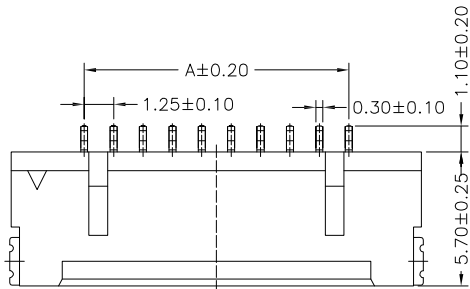
02P



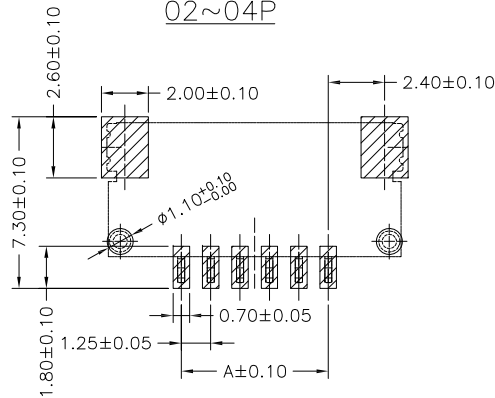
03P



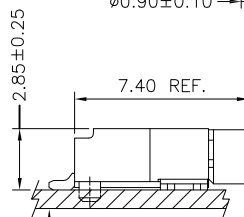
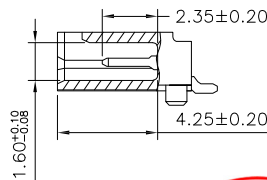
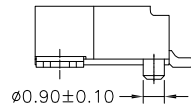
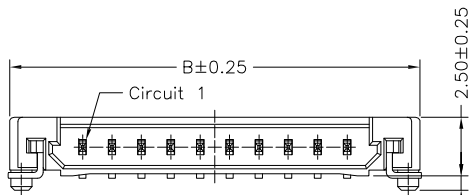
02~04P



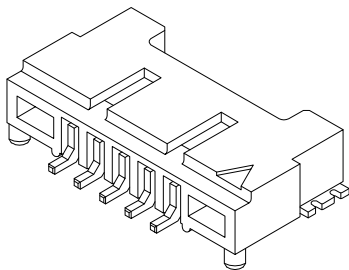
04P~30P



P.C.B. LAYOUT



PCB MATED CONDITION



SPECIFICATIONS

Current Rating: 1A AC,DC
 Voltage Rating: 150V AC,DC
 Temperature Range: -25°C ~ +85°C
 Contact Resistance: 30mΩ Max.
 Insulation Resistance: 500MΩ Min.
 Withstanding Voltage: 500V AC/minute
 Pin Material: Phosphor Bronze
 Solder Tabs: Phosphor Bronze
 Wafer: Nylon 9T,UL94V-0
 Cap: Nylon 9T,UL94V-0
 Color: Natural (Beige)

P/N LEGEND

A1251 WR-S-XXX

① ② ③ ④

- ① Series No.
- ② Connector type: WR=Right angle
- ③ Mounting type: SF=SMT with boss
- ④ No. of circuits

Circuit No.	Dimensions		Circuit No.	Dimensions	
	A	B		A	B
02P	1.25	7.45	11P	12.50	18.70
03P	2.50	8.70	12P	13.75	19.95
04P	3.75	9.95	13P	15.00	21.20
05P	5.00	11.20	14P	16.25	22.45
06P	6.25	12.45	15P	17.50	23.70
07P	7.50	13.70	20P	23.75	29.95
08P	8.75	14.95	21P	25.00	31.20
09P	10.00	16.20	25P	30.00	36.20
10P	11.25	17.45	30P	36.25	42.45



GENERAL TOLERANCE	
.X	±0.35
.XX	±0.25
.XXX	±0.15
X.°	±2°
PROJECT	



东莞市国亚电子有限公司
 Dong Guan Guo Ya Connectors co., Ltd.

PART NO.
 A1251WRS-XXX

TITLE 1.25 mm C/Imp Style Connectors

APPROVAL	CHECK	DRAWN	DATE
Yangzhengguo	Yangzhengyi	Lvtiansheng	2016/08/26

UNIT	SCALE	SHEET	REV	NUMBER
mm	1:1	1/1	A0	A-025

DATE	REV	ECN NO.	DESCRIPTION	MODIFY	APPROVAL
1	2	3	4	5	6